

# 2025 Technical Data Sheets

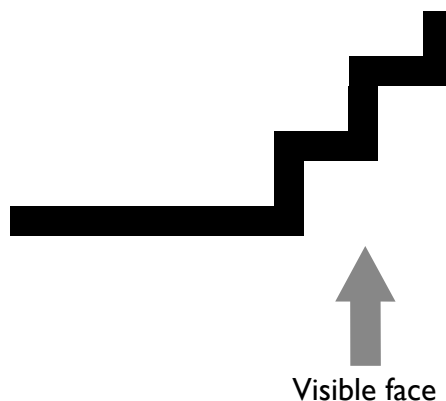
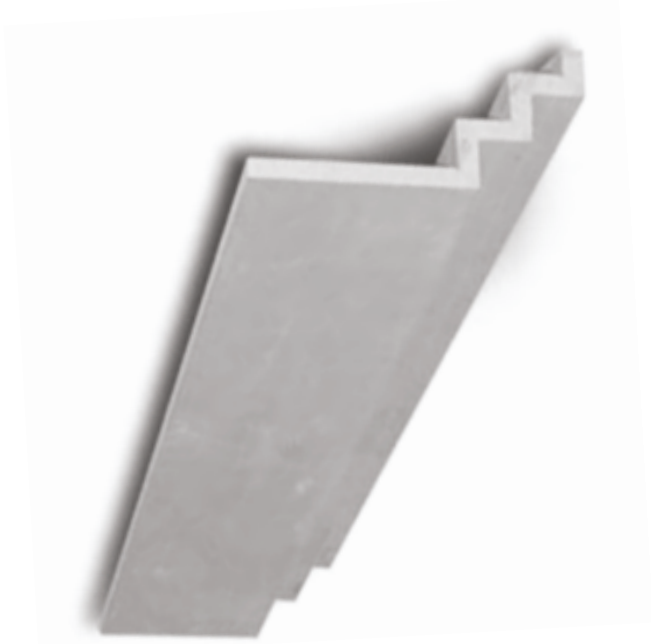


**INFINITY**  
**FORM**

CREATIVIDAD FUNCIONAL SIN LÍMITES

## Product: Stepped profile

Reference No.: NES 5020



### DESCRIPTION:

Stepped profile (50x50x50x50x50x50x2000 mm).  
Standard plasterboard. Thickness: 13 mm.  
Standard length: 2000 mm.

#### Applications:

Quick to install for the perfect finish. This profile is an excellent solution for decorative trims, uneven ceilings or lighting channels.

#### Note:

- 15 mm board is available for an extra 10% of the sale price.
- Water-resistant and fire-resistant boards are available for an extra 15% of the sale price.
- Please contact us if you require different lengths.

Don't hesitate to contact our technical team if you require any other size or special profile.

## Product: Curved profile

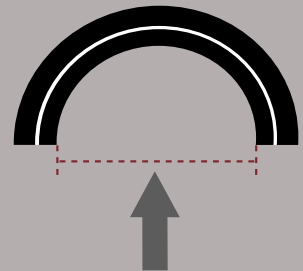
Reference No.: NPE-C U



### DESCRIPTION:

Curved profile available with diameters from 210 mm upwards.  
Standard plasterboard. Thickness: 13 mm.  
Maximum length: 3000 mm.

Applications:  
Quick to install for the perfect finish. This piece is an  
Dimensions:  
excellent solution for covering all kinds of pillars or  
Internal diameter.



Internal diameter. Please note:  
creating decorative concave or convex elements.  
For diameters greater than 700 mm, the full profile  
is supplied in various pieces.

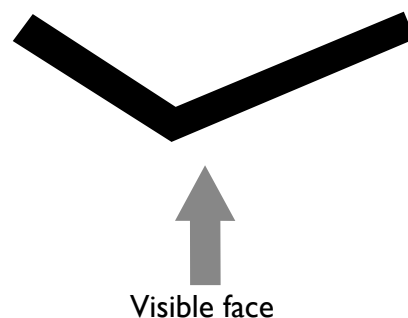
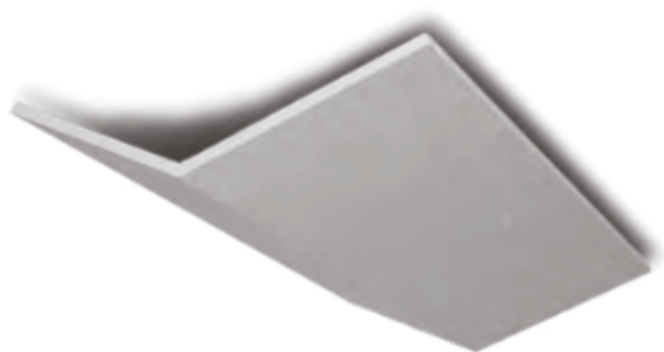
#### Note:

- Curved profiles fabricated using a double layer of 13 mm slotted plasterboard.
- Water-resistant and fire-resistant boards are available for an extra 15% of the sale price.
- 15 mm board is available for an extra 10% of the sale price.
- The dimensions given refer to the internal diameter.
- Marks created by the internal slotting are visible on both faces of the profile. For a smooth finish, we recommend applying a layer of surface filler.

Don't hesitate to contact our technical team if you require any other size or special profile.

Product: 135° L-shape profile

Reference No.: NL 135° 20



## DESCRIPTION:

Obtuse angle profile (135°).  
Dimensions: 400 x 200 x 2000 mm.  
Standard plasterboard. Thickness: 13 mm.  
Maximum length: 2000 mm.

### Applications:

Obtuse angle profile. Ideal for uneven ceilings at different heights or lighting channels.  
Other widths are available on request.

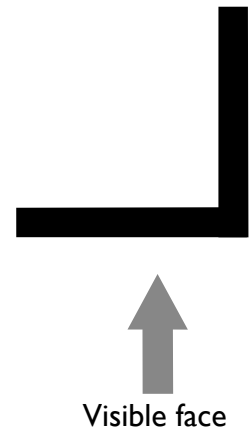
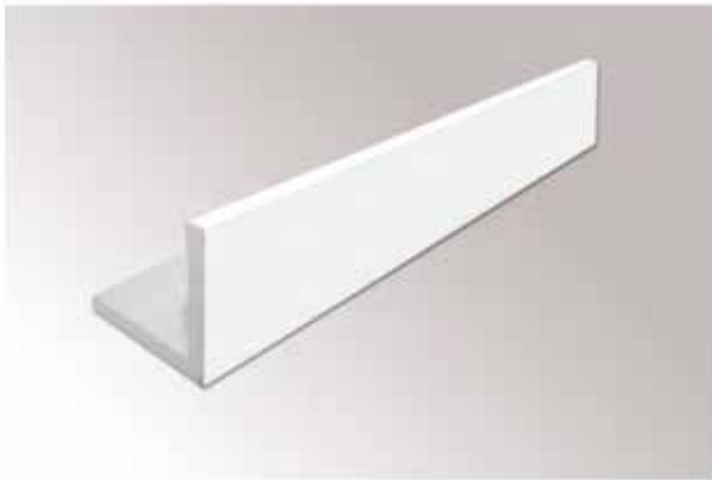
### Note:

- 15 mm board is available for an extra 10% of the sale price.
- Water-resistant and fire-resistant boards are available for an extra 15% of the sale price.
- Please contact us if you require different lengths.

Don't hesitate to contact our technical team if you require any other size or special profile.

**Product: L-shape profile (visible face on outside)**

**Reference No.: NPE-L**



## **DESCRIPTION:**

Right-angled profile (90°) with visible face on the outside.

Dimensions: 100 mm to 1200 mm.

Standard plasterboard. Thickness: 13 mm.

Maximum length: 3000 mm.

Applications:

Right-angled profile. Ideal for uneven ceilings

at different heights. Can be easily used to cover all kinds of ducting or

pipework

for plumbing, cabling or ventilation.

Perfect for junction boxes and lighting channels.

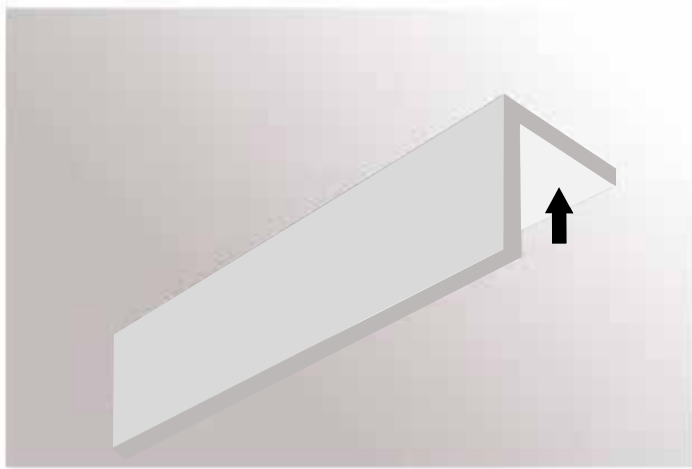
Note:

- This profile is supplied in standard lengths of 2400 mm.
- Please contact us if you require different lengths.
- 15 mm board is available for an extra 10% of the sale price.
- Water-resistant and fire-resistant boards are available for an extra 15% of the sale price.

**Don't hesitate to contact our technical team if you require any other size or special profile.**

**Product: L-shape profile (visible face on inside)**

**Reference No.: NPE-LI**



## DESCRIPTION:

Right-angled profile (90°) with visible face on the inside.  
Dimensions: 100 mm to 1200 mm.  
Standard plasterboard. Thickness: 13 mm.  
Maximum length: 3000 mm.

### Applications:

Right-angled profile. Ideal for uneven ceilings at different heights. Can be easily used to cover all kinds of ducting or pipework for plumbing, cabling or ventilation.  
Perfect for junction boxes and lighting channels.

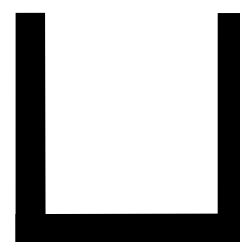
### Note:

- This profile is supplied in standard lengths of 2400 mm.
- Please contact us if you require different lengths.
- 15 mm board is available for an extra 10% of the sale price.
- Water-resistant and fire-resistant boards are available for an extra 15% of the sale price.

**Don't hesitate to contact our technical team if you require any other size or special profile.**

Product: U-shape profile (visible face on outside)

Reference: NPE-U



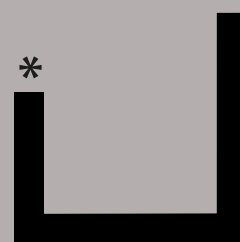
Visible face

## DESCRIPTION:

U-shaped profile ( $90^\circ + 90^\circ$ ).  
Dimensions: 300 mm to 1200 mm.  
Standard plasterboard. Thickness: 13 mm.  
Maximum length: 3000 mm.

### Applications:

U-shaped profile that can easily be used to cover all kinds of ducting or pipework for plumbing, cabling or ventilation. Ideal for false beams and lighting channels. The two sides of the "U" shape can be different heights.



Visible face

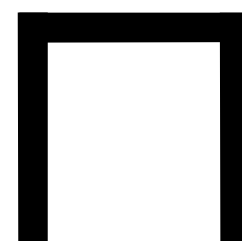
### Note:

- This profile is supplied in standard lengths of 2400 mm.
- Please contact us if you require different lengths.
- 15 mm board is available for an extra 10% of the sale price.
- Water-resistant and fire-resistant boards are available for an extra 15% of the sale price.

Don't hesitate to contact our technical team if you require any other size or special profile.

**Product: U-shape profile (visible face on inside)**

**Reference No: NPE-UI**

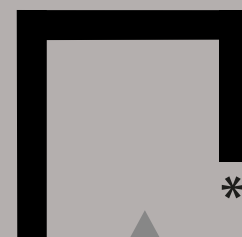


Visible face

## DESCRIPTION:

U-shaped profile ( $90^\circ + 90^\circ$ ).  
Dimensions: 300 mm to 1200 mm.  
Standard plasterboard. Thickness: 13 mm.  
Maximum length: 3000 mm.

Applications:  
Special U-shape profile for ceiling coves and lighting channels.  
The two sides of the "U" shape can be different heights.



Visible face

### Note:

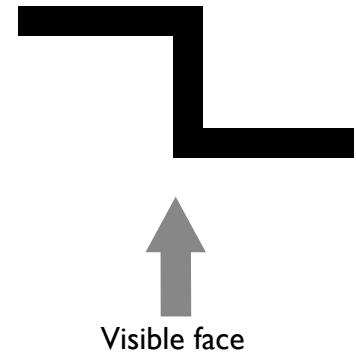
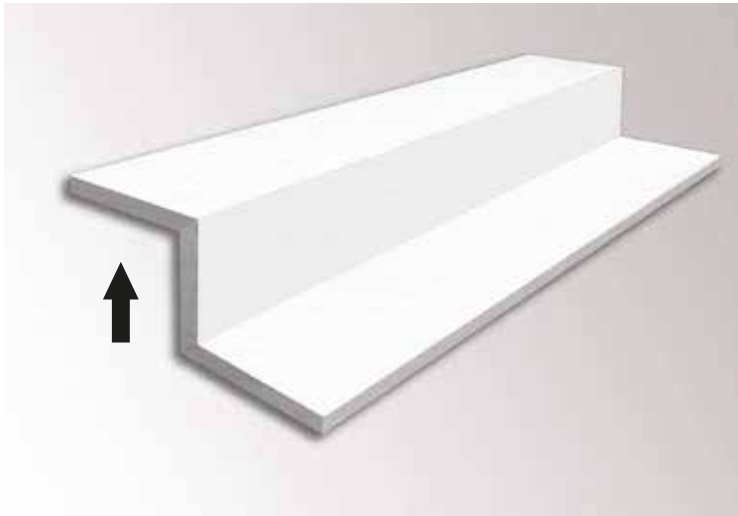
- This profile is supplied in standard lengths of 2400 mm.
- Please contact us if you require different lengths.
- 15 mm board is available for an extra 10% of the sale price.
- Water-resistant and fire-resistant boards are available for an extra 15% of the sale price.

**Don't hesitate to contact our technical team if you require any other size or special profile.**



## Product: Z-shape profile

Reference No.: NPE-Z



### DESCRIPTION:

Z-shaped profile (90° - 90°).  
Dimensions: 100 mm to 1200 mm.  
Standard plasterboard. Thickness: 13 mm.  
Maximum length: 3000 mm.

Applications:  
Z-shaped profile especially suitable for lighting channels. It also can be used for exceptional results as a curtain rail cover or for different ceiling heights.

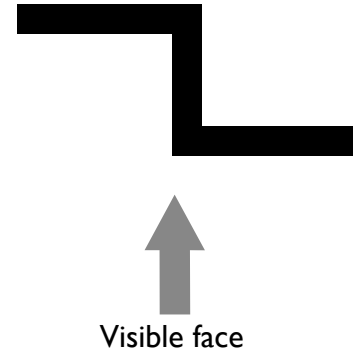
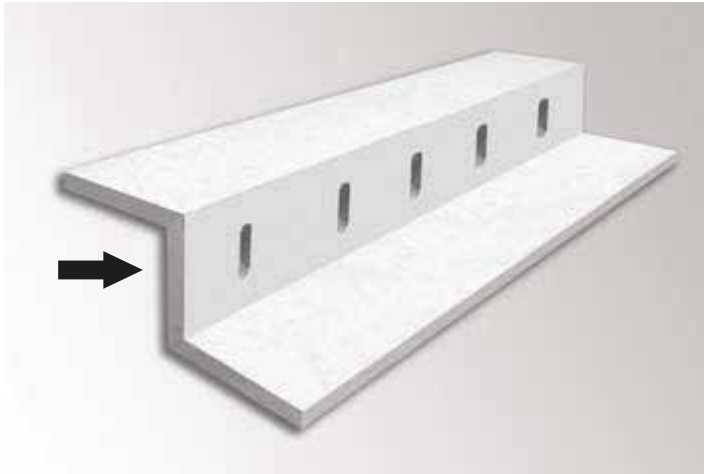
#### Note:

- This profile is supplied in standard lengths of 2400 mm.
- Please contact us if you require different lengths.
- 15 mm board is available for an extra 10% of the sale price.
- Water-resistant and fire-resistant boards are available for an extra 15% of the sale price.

Don't hesitate to contact our technical team if you require any other size or special profile.

## Product: Z-shape slotted profile

Reference No.: NPE-ZR



### DESCRIPTION:

Z-shaped profile (90° - 90°).  
Dimensions: 100 mm to 1200 mm.  
Standard plasterboard. Thickness: 13 mm.  
Maximum length: 3000 mm.

#### Applications:

Z-shaped profile especially suitable for lighting channels.  
It can also be used for exceptional results as a curtain rail cover  
or for different ceiling heights.

#### Note:

- This profile is supplied in standard lengths of 2400 mm.
- Please contact us if you require different lengths.
- 15 mm board is available for an extra 10% of the sale price.
- Water-resistant and fire-resistant boards are available for an extra 15% of the sale price.

Don't hesitate to contact our technical team if you require any other size or special profile.

**Product: Shelf**

**Reference No.: NBAL**

**INFINITY  
FORM**

CREATIVIDAD FUNCIONAL SIN LÍMITES



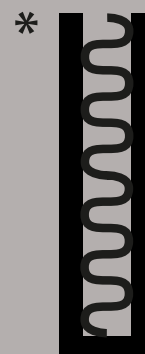
## DESCRIPTION:

Straight-edged plasterboard shelf with cardboard honeycomb interior.  
Dimensions: 150 mm to 575 mm x 50 mm.  
Standard plasterboard. Thickness: 13 mm.  
Important: to be installed on 25 mm profile.

### Applications:

Shelf designed for creating all manner of shelving and plasterboard furniture.

Can also be used as a separator or curtain rail cover.



### Note:

- This profile is supplied in standard lengths of 2400 mm.
- Please contact us if you require different lengths.

Don't hesitate to contact our technical team if you require any other size or special profile.



## **DESCRIPTION:**

Access panel fabricated entirely from water-resistant plasterboard.

Standard dimensions from 200x200 mm to 600x600 mm.

Water-resistant plasterboard. Thickness: 13 mm.

Assemblies with bespoke dimensions and multiple panels can be manufactured on request.

Applications:

Quick to install in false ceilings.

Integrates perfectly with plasterboard systems due to its design and its structural and decorative coherence.

Its design makes it highly discreet once installed.

Note:

- Bespoke dimensions are available on request.
- Assemblies with multiple panels can be manufactured on request.
- It is recommended to paint the parts separately and never apply paint to overlapping areas.

**Don't hesitate to contact our technical team if you require any other size or special profile.**



## **DESCRIPTION:**

Access panel fabricated entirely from water-resistant plasterboard.

Standard dimensions: 300x300 mm to 600x600 mm.

Water-resistant plasterboard. Thickness: 13 mm.

Assemblies with bespoke dimensions and multiple panels can be manufactured on request.

Applications:

Quick to install on partition walls or plasterboard.

Integrates perfectly in plasterboard systems due to its design and its structural and decorative coherence.

Its design makes it highly discreet once installed.

Note:

- Bespoke dimensions are available on request.
- Assemblies with multiple panels can be manufactured on request.
- It is recommended to paint the parts separately and never apply paint to overlapping areas.

**Don't hesitate to contact our technical team if you require any other size or special profile.**

**Product: Flexible panel**

**Reference No.: NPE**



## **DESCRIPTION:**

Plasterboard with lengthwise grooves.  
Square-edge plasterboard. Thickness: 13 mm.  
Standard lengths: 2400 mm and 3000 mm.

### **Applications:**

Quick to install on partition walls and suitable as curved wall linings or ceilings.

An excellent solution for covering all kinds of construction elements with different finish diameters.

### **Note:**

- Marks created by the internal slotting are visible on the visible face.  
For a smooth finish, a coat of surface filler is recommended.

**Don't hesitate to contact our technical team if you require any other size or special profile.**